

Centrify Identity Service

Cloud and mobile are here to stay.



Cloud and mobile apps are quickly forcing their way into the enterprise, facilitating employee productivity, but exposing business-critical data. Cloud apps, and the mobile devices that can access app data, are often outside of IT control.

Managing Access is the Problem

Too many locks – too many keys

Managing and securing access to each individual cloud app and mobile device means managing unique accounts, passwords, and policies across hundreds — often thousands — of endpoints and apps. With so many disparate systems and devices, IT needs a single solution from which to provision users and manage access policy across all apps, from any device, regardless of location.

Password sprawl wastes time for IT and users

With growing application access, users are resorting to password sharing and reuse, exposing corporate data to attacks based on compromised credentials. Compounding this issue is an exponential increase in helpdesk calls and tickets for password resets — reducing IT productivity and user satisfaction.

User productivity leads to IT inefficiency

With dozens — or hundreds — of apps in use, controlling which users have access to specific apps becomes unmanageable. Staying on top of account provisioning is not only cumbersome, but leads to security holes and failed compliance audits if terminated employees have access to corporate apps and data after they leave.

Identity is the Solution

Integrated cloud app and mobile management

Centrify Identity Service uniquely unifies cloud app and mobile management into an enterprise cloud service. Centrify leverages identity to secure and manage users' access to applications from any device, regardless of location.

By leveraging a single identity across cloud, mobile and onsite apps, users get a single username and password across all the apps they use for work, and IT can enforce consistent access policies based on user identity.

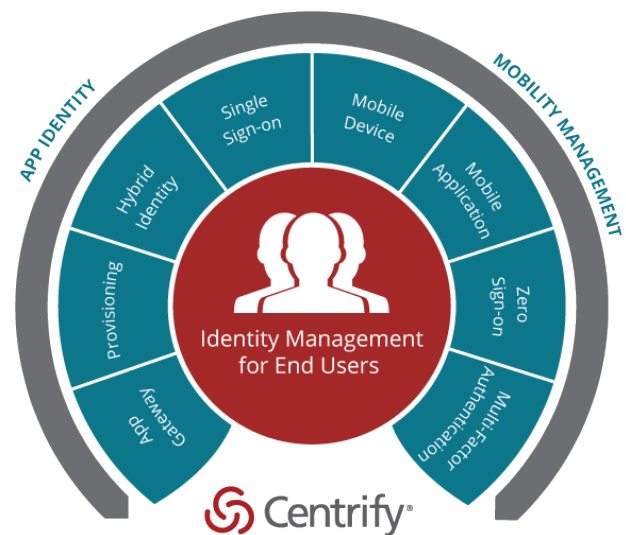
Identity Service provides a single, simple cloud portal for app management. Users get one-click access all their apps from any device, and IT gets policy-based control, and automated provisioning and account management.

Centrify Identity Service: The benefits of integrated identity management

Centrify Identity Service provides security, simplicity and control. IT gets one place to manage all accounts and devices. Users get single sign-on across cloud and mobile apps from any of their device.

Security

- Control cloud and mobile applications with identity-based policy across apps and devices
- Eliminate the security risk of simple, reused and/or improperly managed passwords
- Enable secure, remote access to on-premises apps — without the risks and hassles of VPNs
- Implement a secure BYOD policy with Centrify's integrated Mac and mobile device management

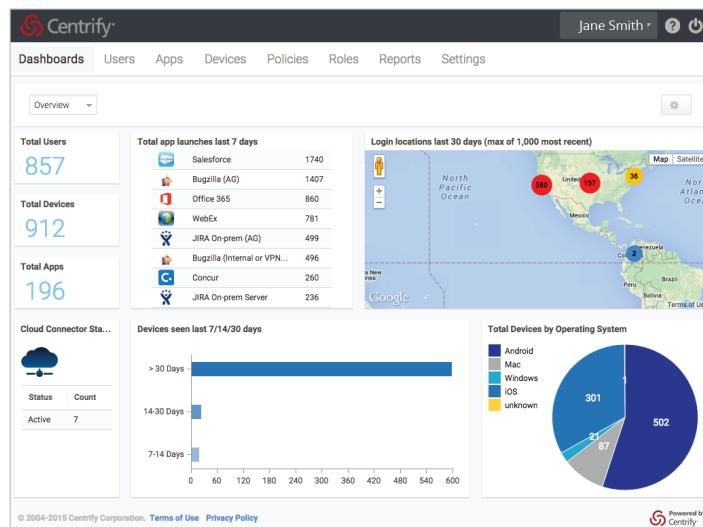


Simplicity

- Automate the account provisioning/deprovisioning and licensing entitlements for business apps
- Eliminate separate policy silos with integrated management of cloud, mobile and onsite apps
- Reduce helpdesk tickets for password resets and device management, with user self service

Control

- Prove app ROI and show compliance with granular app and device reporting
- Enforce user policy from a single authoritative source, applied across devices, apps, and locations
- Control access using existing on-site Active Directory, LDAP, a cloud directory, or any combination



The Identity Service Admin Portal gives IT control of apps, devices and policy

Flexible Subscription Options

Centrify Identity Service

Single Sign-on

Turnkey support for 2500+ cloud, mobile and on-prem apps, or add your own app.

	Express	App	App+
Single Sign-on		✓	✓

Enterprise Mobility Management

Integrated mobile device and app management. Device certificate management for PKI.

Enterprise Mobility Management	MDM only	✓	✓
--------------------------------	----------	---	---

Hybrid Identity—Active Directory, LDAP, and/or Cloud

Class-leading Active Directory and LDAP support without cloud replication. Cloud directory for non-Active Directory or LDAP users. User self-service & password resets.

Hybrid Identity—Active Directory, LDAP, and/or Cloud		✓	✓
--	--	---	---

Multi-factor Authentication and Policy

Context-based step-up and multi-factor authentication using managed devices. Rich per-app policy and reporting. Single-click authentication.

Multi-factor Authentication and Policy		✓	✓
--	--	---	---

User Account Provisioning

Full lifecycle management of cloud and on-premises apps & devices based on role: access, authorization, SSO, revocation.

User Account Provisioning		✓	✓
---------------------------	--	---	---

On-Premises App Gateway

Secure access to on-premises apps without VPN. Single cloud connector across multiple apps. No additional infrastructure required.

On-Premises App Gateway			✓
-------------------------	--	--	---

Deepest Mac Management

Remote lock & wipe. Active Directory Join. Granular policy controls thru GPO within Active Directory. FileVault2 encryption. PKI Certificate.

Deepest Mac Management			
		\$4/user/mo.	\$8/user/mo.

Try Centrify Identity Service for free: www.centrify.com/express/identity-service/



Centrify strengthens enterprise security by managing and securing user identities from cyber threats. As organizations expand IT resources and teams beyond their premises, identity is becoming the new security perimeter. With our platform of integrated software and cloud-based services, Centrify uniquely **secures and unifies identity** for both privileged and end users across today's hybrid IT world of cloud, mobile and data center. The result is stronger security and compliance, improved business agility and enhanced user productivity through **single sign-on**. Over 5000 customers, including half of the Fortune 50 and over 80 federal agencies, leverage Centrify to secure their identity management. Learn more at www.centrify.com.

SANTA CLARA, CALIFORNIA	+1 (669) 444-5200
EMEA	+44 (0) 1344 317950
ASIA PACIFIC	+61 1300 795 789
BRAZIL	+55 11-3958 4876
LATIN AMERICA	+1 305 900 5354
EMAIL	sales@centrify.com
WEB	www.centrify.com